



Guided Pathways

District-level Progress on Momentum Points and College Updates

Board of Trustees

Riverside Community College District

May 03, 2022



RCCD Guided Pathways Progress on Momentum Points

- The following slides present annual District-level progress on Guided Pathways Momentum Points
- College-level progress on Guided Pathways Momentum Points are available on the [GP Dashboard](#)
- Data Set: 37,536 students representing 79.7% of all First-Time Freshmen from Cohorts beginning Summer or Fall Term 2016 to 2020
- Source files: CCCCO Referential Files, National Student Clearinghouse



Guided Pathways Momentum Points

1. Enrollment for First-Time Freshmen by Full-Time and Part-Time Status
2. Average Units Earned During First Year
3. Passed English and Math During First Year
4. 3-Year Completions by:
 - a) Degree, Certificate, and Transfer
 - b) Degree and Certificate Only
 - c) Transfer Only

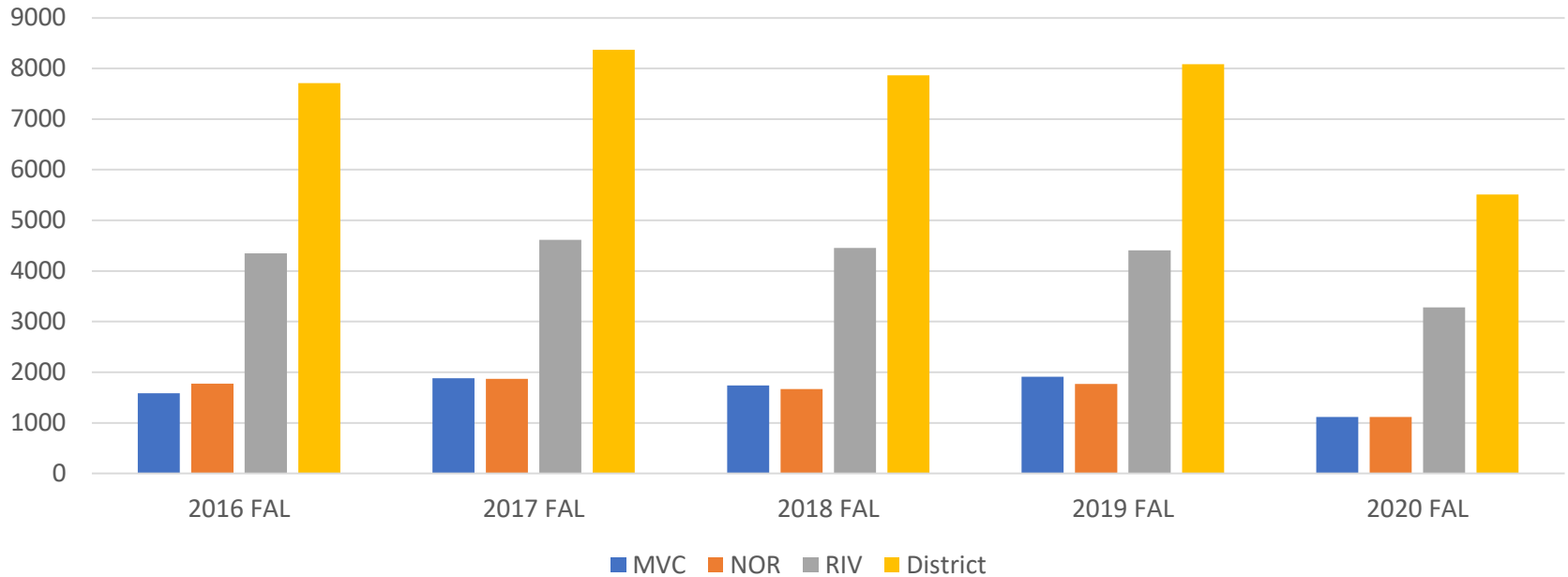


Guided Pathways Momentum Points

1. Enrollment for First-Time Freshmen by Full-Time and Part-Time Status
2. Average Units Earned During First Year
3. Passed English and Math During First Year
4. 3-Year Completions by:
 - a) Degree, Certificate, and Transfer
 - b) Degree and Certificate Only
 - c) Transfer Only



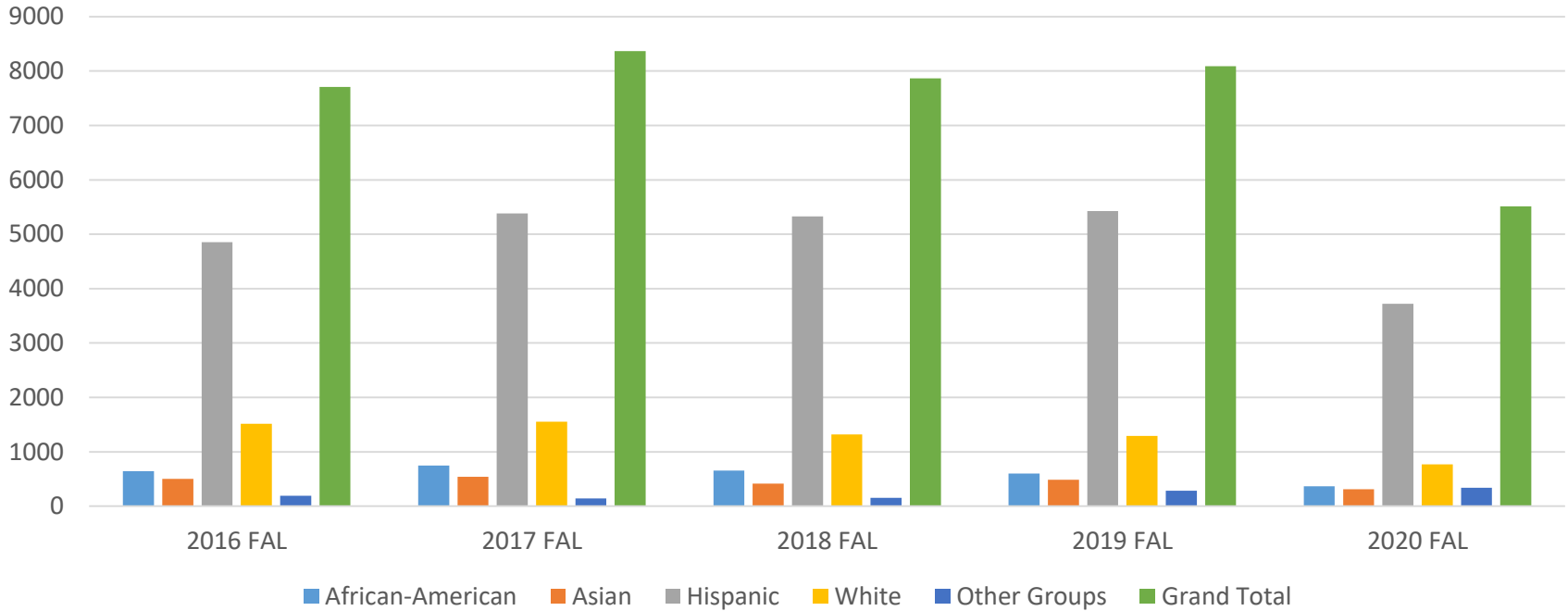
First-Time Freshman Headcount by College and Cohort



Home College	Fall 2016		Fall 2017		Fall 2018		Fall 2019		Fall 2020	
	Count	Percent	Count	Percent	Count	Percent	Count	Percent	Count	Percent
MVC	1587	20.6%	1881	22.5%	1739	22.1%	1911	23.6%	1117	20.3%
NC	1775	23.0%	1871	22.4%	1668	21.2%	1770	21.9%	1115	20.2%
RCC	4346	56.4%	4616	55.2%	4456	56.7%	4405	54.5%	3279	59.5%
District	7708	100.0%	8368	100.0%	7863	100.0%	8086	100.0%	5511	100.0%



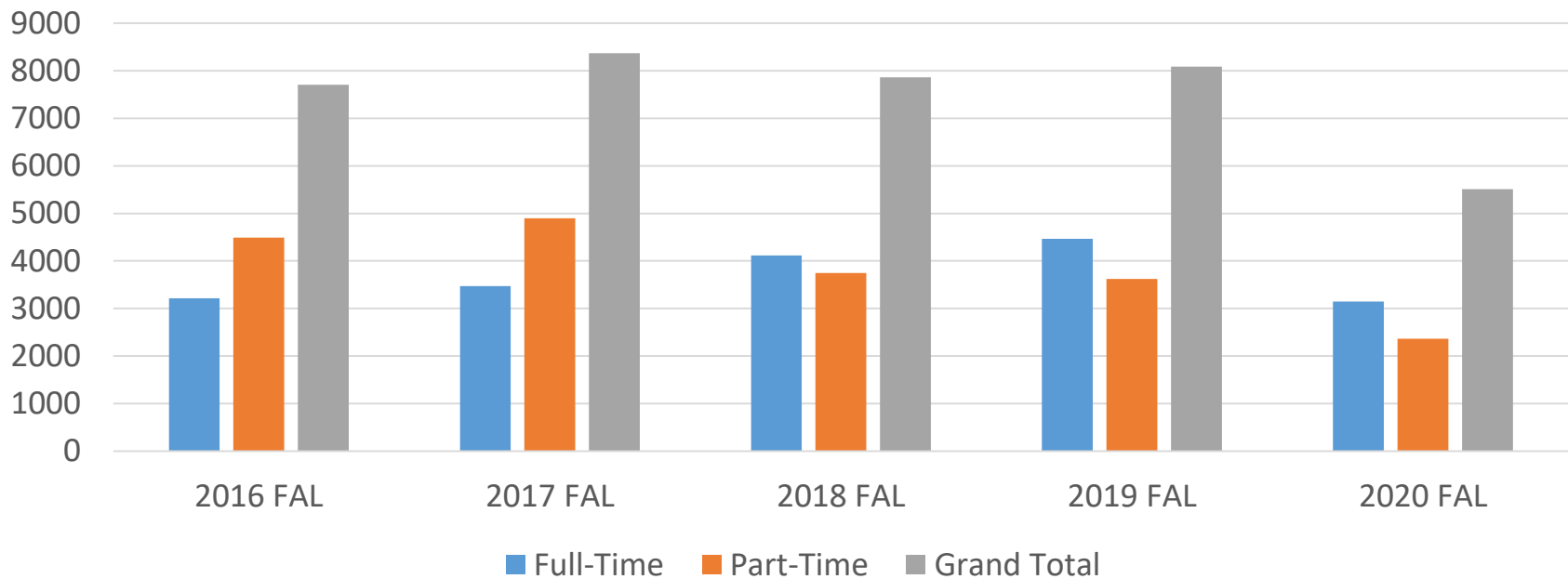
First Time Freshman Headcount by Ethnicity and Cohort, Districtwide



Home College	Fall 2016		Fall 2017		Fall 2018		Fall 2019		Fall 2020	
	Count	Percent	Count	Percent	Count	Percent	Count	Percent	Count	Percent
African-American	642	8.3%	748	8.9%	652	8.3%	599	7.4%	366	6.6%
Asian	504	6.5%	541	6.5%	413	5.3%	487	6.0%	311	5.6%
Hispanic	4853	63.0%	5384	64.3%	5326	67.7%	5425	67.1%	3723	67.6%
White	1515	19.7%	1555	18.6%	1319	16.8%	1292	16.0%	770	14.0%
Other Groups	194	2.5%	140	1.7%	153	1.9%	283	3.5%	341	6.2%
Grand Total	7708	100.0%	8368	100.0%	7863	100.0%	8086	100.0%	5511	100.0%



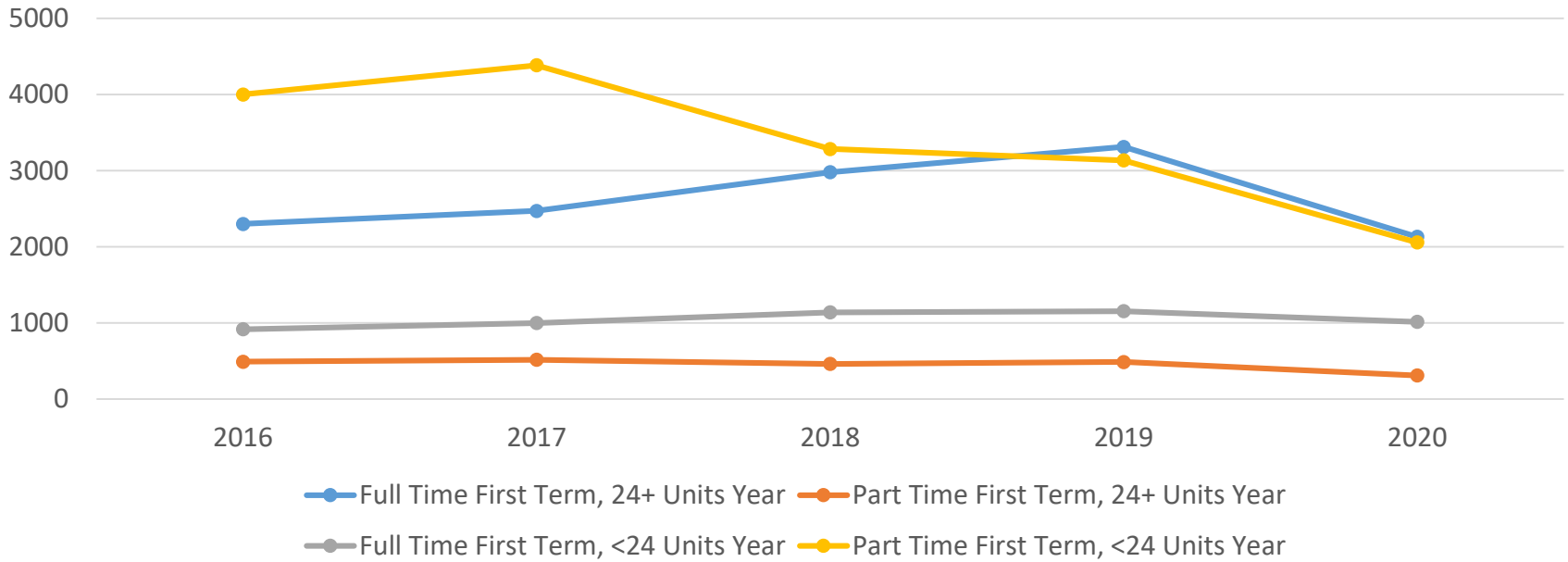
First Time Freshman by Full-Time First-Term Status Districtwide



	Fall 2016		Fall 2017		Fall 2018		Fall 2019		Fall 2020	
	Count	Percent	Count	Percent	Count	Percent	Count	Percent	Count	Percent
Full-Time	3216	41.7%	3469	41.5%	4117	52.4%	4465	55.2%	3145	57.1%
Part-Time	4492	58.3%	4899	58.5%	3746	47.6%	3621	44.8%	2366	42.9%
Grand Total	7708	100.0%	8368	100.0%	7863	100.0%	8086	100.0%	5511	100.0%



First Time Freshman by Full-Time First Term Status Districtwide



	2016		2017		2018		2019		2020	
	Count	Percent	Count	Percent	Count	Percent	Count	Percent	Count	Percent
Full Time First Term, 24+ Units Year	2300	29.8%	2471	29.5%	2979	37.9%	3311	40.9%	2131	38.7%
Part Time First Term, 24+ Units Year	491	6.4%	515	6.2%	461	5.9%	486	6.0%	310	5.6%
Full Time First Term, <24 Units Year	916	11.9%	998	11.9%	1138	14.5%	1154	14.3%	1014	18.4%
Part Time First Term, <24 Units Year	4001	51.9%	4384	52.4%	3285	41.8%	3135	38.8%	2056	37.3%
Grand Total	7708	100.0%	8368	100.0%	7863	100.0%	8086	100.0%	5511	100.0%

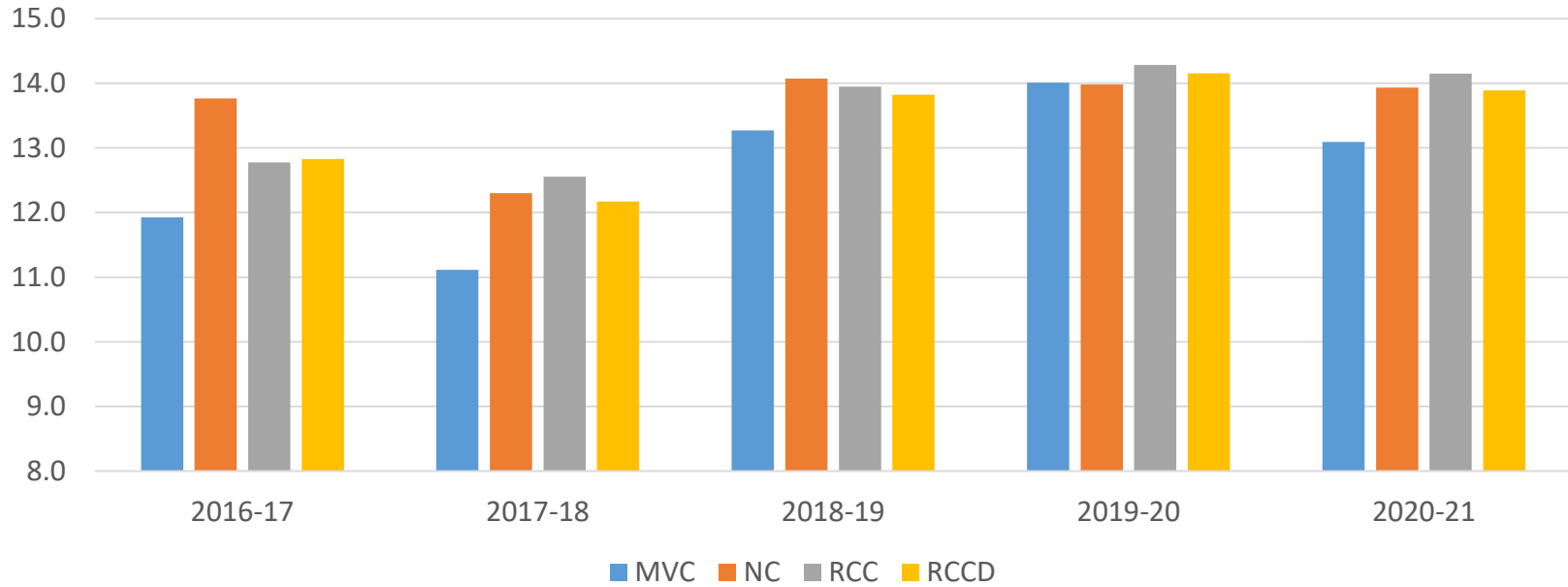


Guided Pathways Momentum Points

1. Enrollment for First-Time Freshmen by Full-Time and Part-Time Status
2. Average Units Earned During First Year
3. Passed English and Math During First Year
4. 3-Year Completions by:
 - a) Degree, Certificate, and Transfer
 - b) Degree and Certificate Only
 - c) Transfer Only



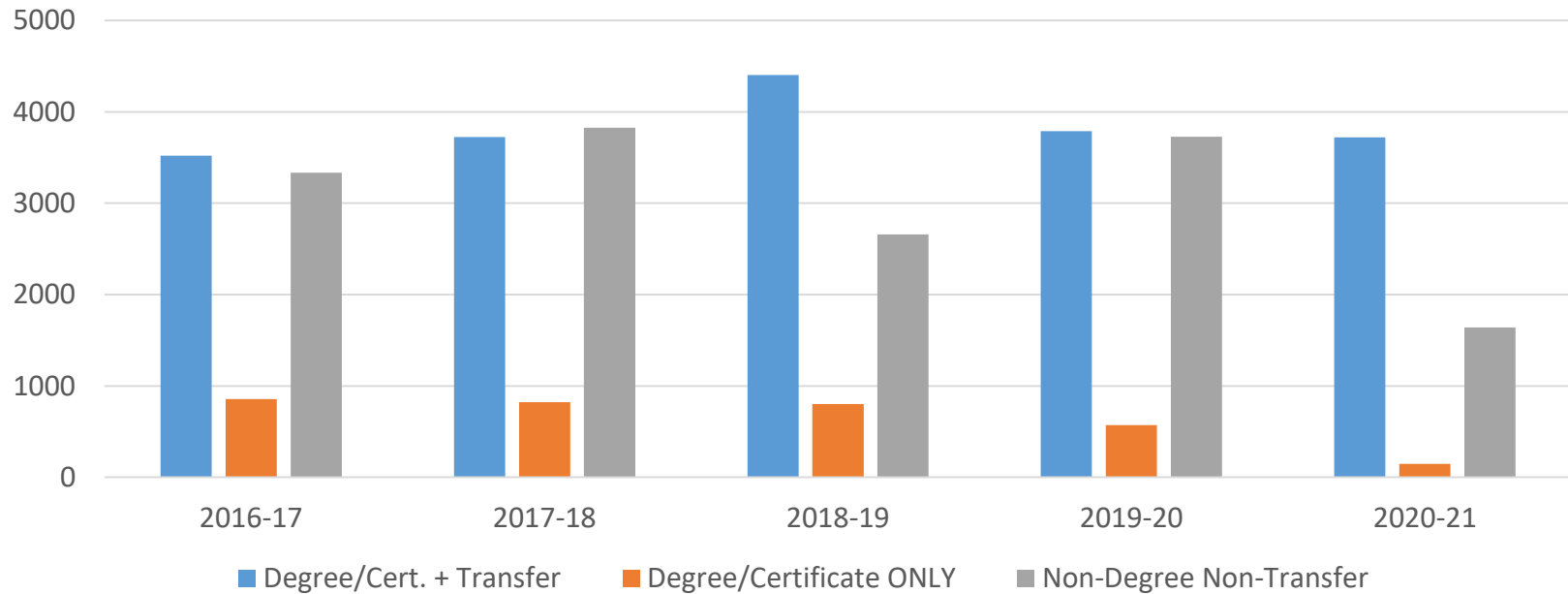
Average Units Earned in First Year by Cohort



Home College	2016-17 (n=7708)	2017-18 (n=8368)	2018-19 (n=7863)	2019-20 (n=8086)	2020-21 (n=5511)
MVC	11.9	11.1	13.3	14.0	13.1
NC	13.8	12.3	14.1	14.0	13.9
RCC	12.8	12.6	13.9	14.3	14.1
RCCD	12.8	12.2	13.8	14.2	13.9



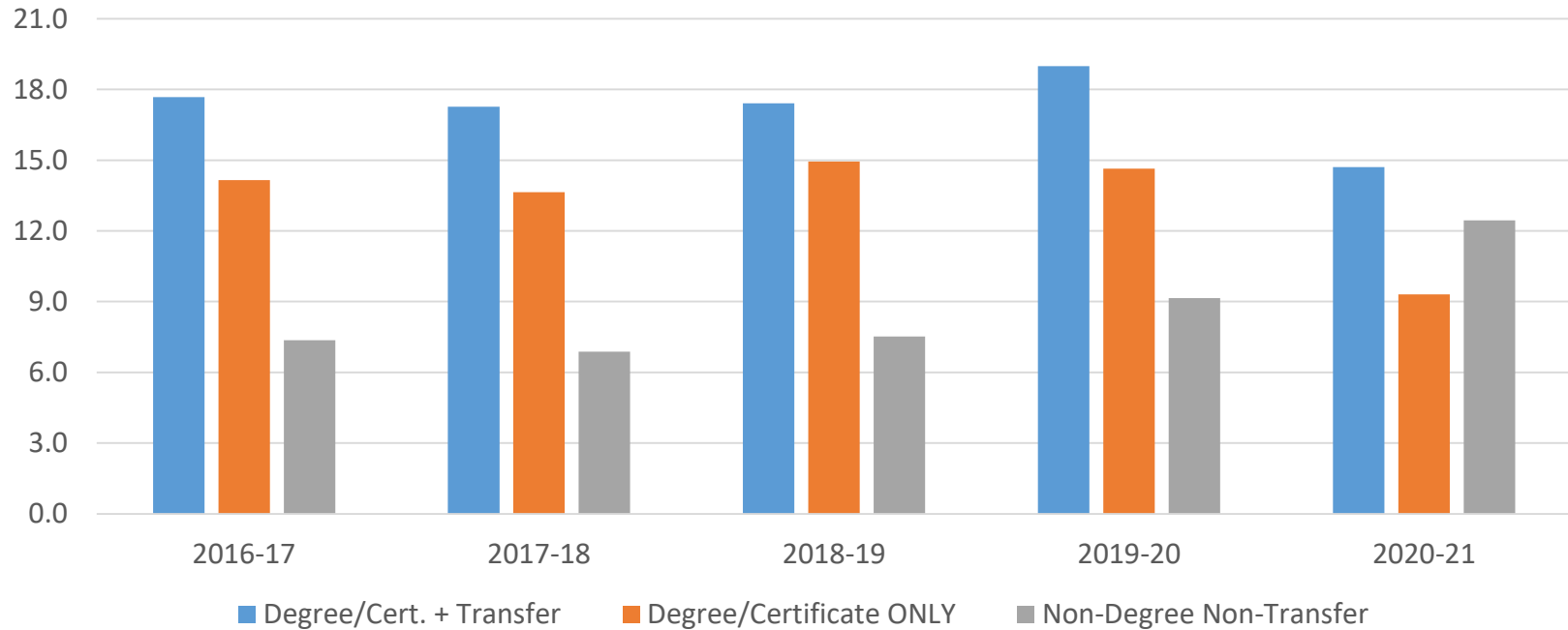
Current Educational Goals by Cohort



	2016-17		2017-18		2018-19		2019-20		2020-21	
	Count	Percent	Count	Percent	Count	Percent	Count	Percent	Count	Percent
Degree/Cert. + Transfer	3519	45.7%	3723	44.5%	4404	56.0%	3787	46.8%	3722	67.5%
Degree/Certificate ONLY	855	11.1%	821	9.8%	801	10.2%	573	7.1%	149	2.7%
Non-Degree Non-Transfer	3334	43.3%	3824	45.7%	2658	33.8%	3726	46.1%	1640	29.8%
Grand Total	7708	100.0%	8368	100.0%	7863	100.0%	8086	100.0%	5511	100.0%



Average Units Earned in First Year by Educational Goal



	2016-17	2017-18	2018-19	2019-20	2020-21
Degree/Cert. + Transfer	17.7	17.3	17.4	19.0	14.7
Degree/Certificate ONLY	14.2	13.6	14.9	14.6	9.3
Non-Degree Non-Transfer	7.4	6.9	7.5	9.2	12.4
Total Students	7708	8368	7863	8086	5511

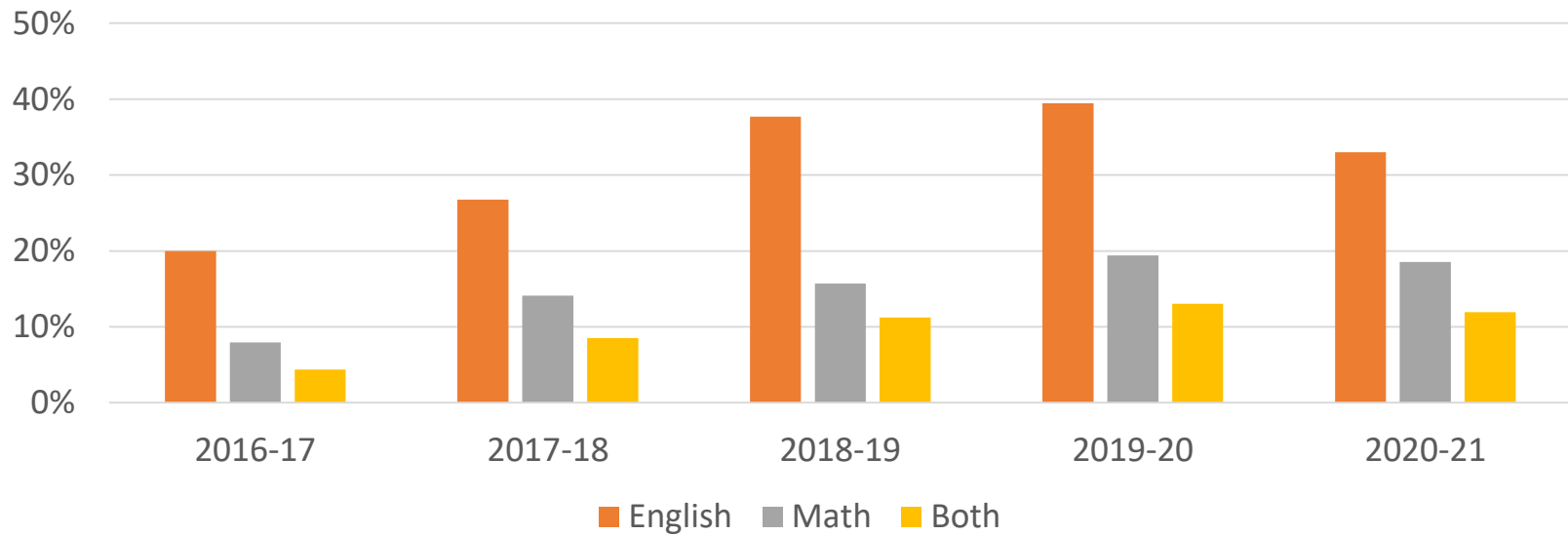


Guided Pathways Momentum Points

1. Enrollment for First-Time Freshmen by Full-Time and Part-Time Status
2. Average Units Earned During First Year
3. Passed English and Math During First Year
4. 3-Year Completions by:
 - a) Degree, Certificate, and Transfer
 - b) Degree and Certificate Only
 - c) Transfer Only



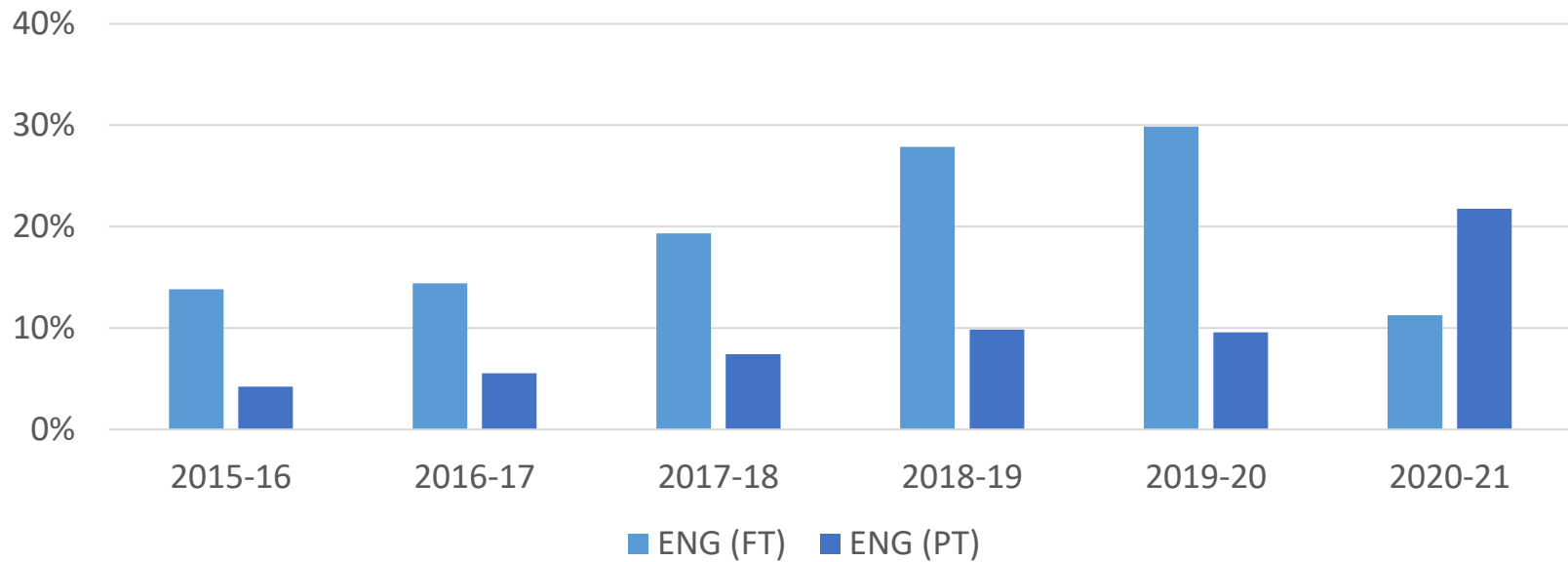
Successful Completion of Transfer Level English, Math and Both During First Year



	English		Math		Both	
	Count	Percent	Count	Percent	Count	Percent
2016-17 (n=7708)	1540	20.0%	613	8.0%	336	4.4%
2017-18 (n=8368)	2239	26.8%	1180	14.1%	714	8.5%
2018-19 (n=7863)	2965	37.7%	1235	15.7%	882	11.2%
2019-20 (n=8086)	3190	39.5%	1570	19.4%	1056	13.1%
2020-21 (n=5511)	1820	33.0%	1022	18.5%	657	11.9%



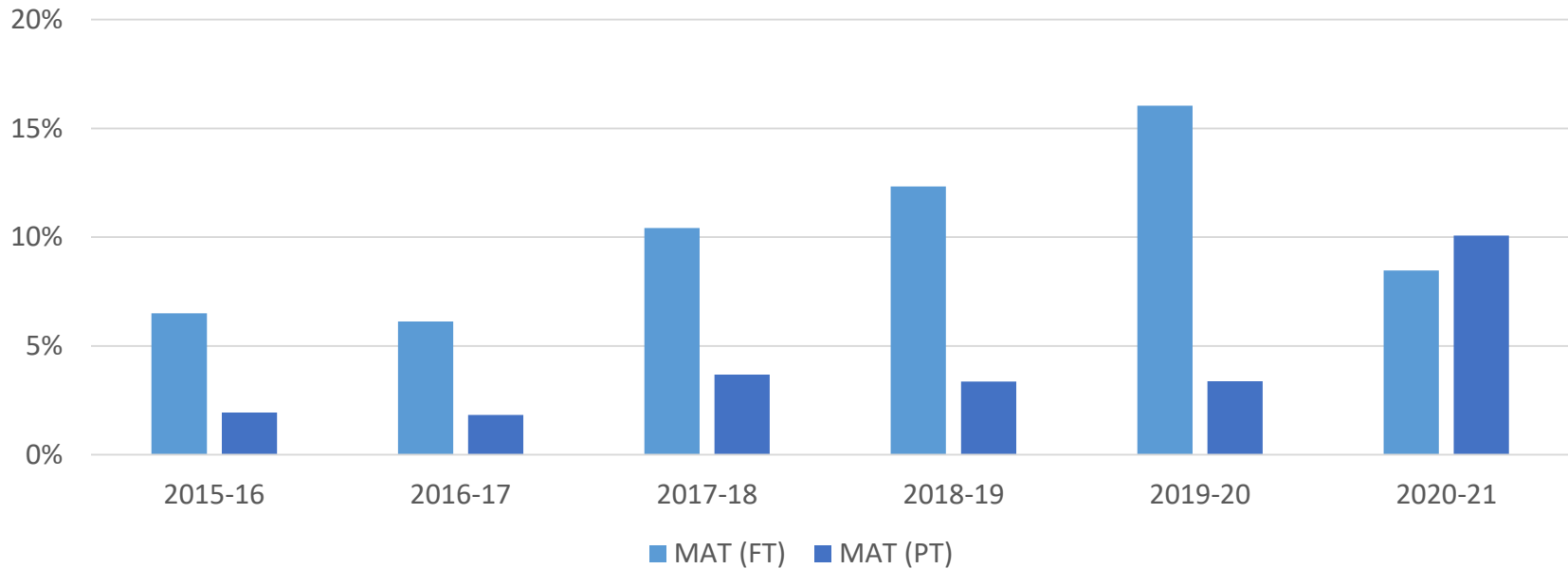
Successful Completion of Transfer Level English by First-Year Full-Time Status



English	First-Year Full-Time		First-Year Not Full-Time	
	Count	Percent	Count	Percent
2016-17 (n=7708)	1112	14.4%	428	5.6%
2017-18 (n=8368)	1618	19.3%	621	7.4%
2018-19 (n=7863)	2190	27.9%	775	9.9%
2019-20 (n=8086)	2414	29.9%	776	9.6%
2020-21 (n=5511)	621	11.3%	1199	21.8%



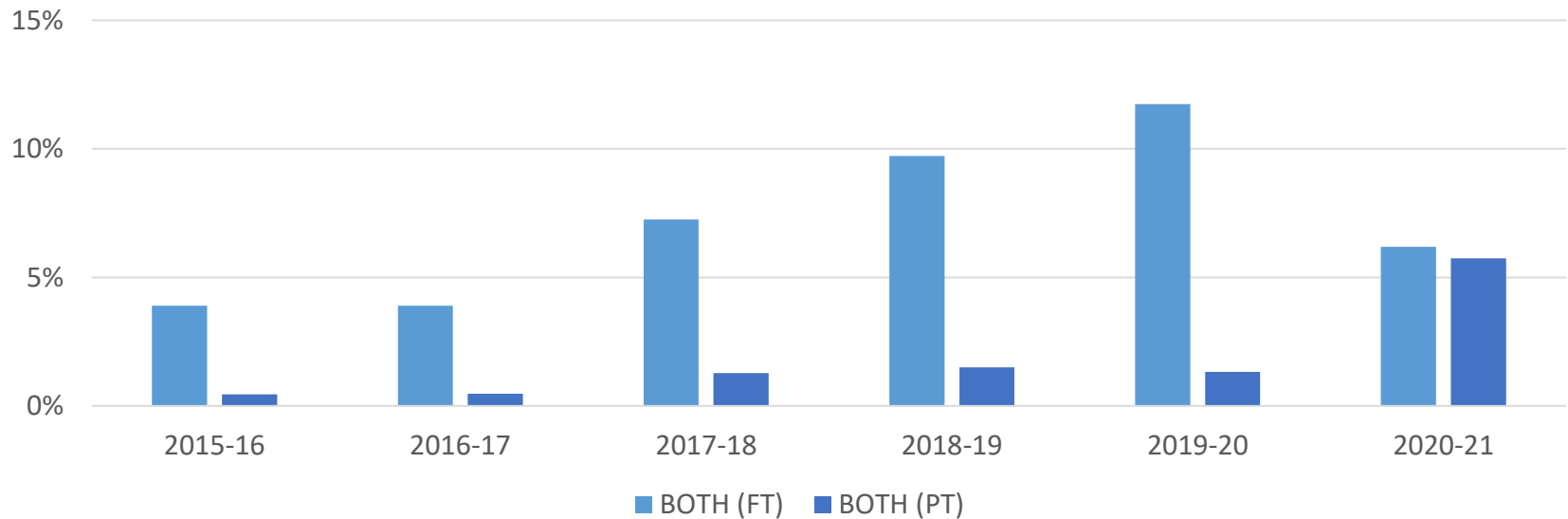
Successful Completion of Transfer Level Math by First-Year Full-Time Status



Math	First-Year Full-Time		First-Year Not Full-Time	
	Count	Percent	Count	Percent
2016-17 (n=7708)	472	6.1%	141	1.8%
2017-18 (n=8368)	872	10.4%	308	3.7%
2018-19 (n=7863)	970	12.3%	265	3.4%
2019-20 (n=8086)	1297	16.0%	273	3.4%
2020-21 (n=5511)	467	8.5%	555	10.1%



Successful Completion of Both Transfer Level English and Math by First-Year Full-Time Status



Both	First-Year Full-Time		First-Year Not Full-Time	
	Count	Percent	Count	Percent
2016-17 (n=7708)	300	3.9%	36	0.5%
2017-18 (n=8368)	607	7.3%	107	1.3%
2018-19 (n=7863)	764	9.7%	118	1.5%
2019-20 (n=8086)	949	11.7%	107	1.3%
2020-21 (n=5511)	341	6.2%	316	5.7%

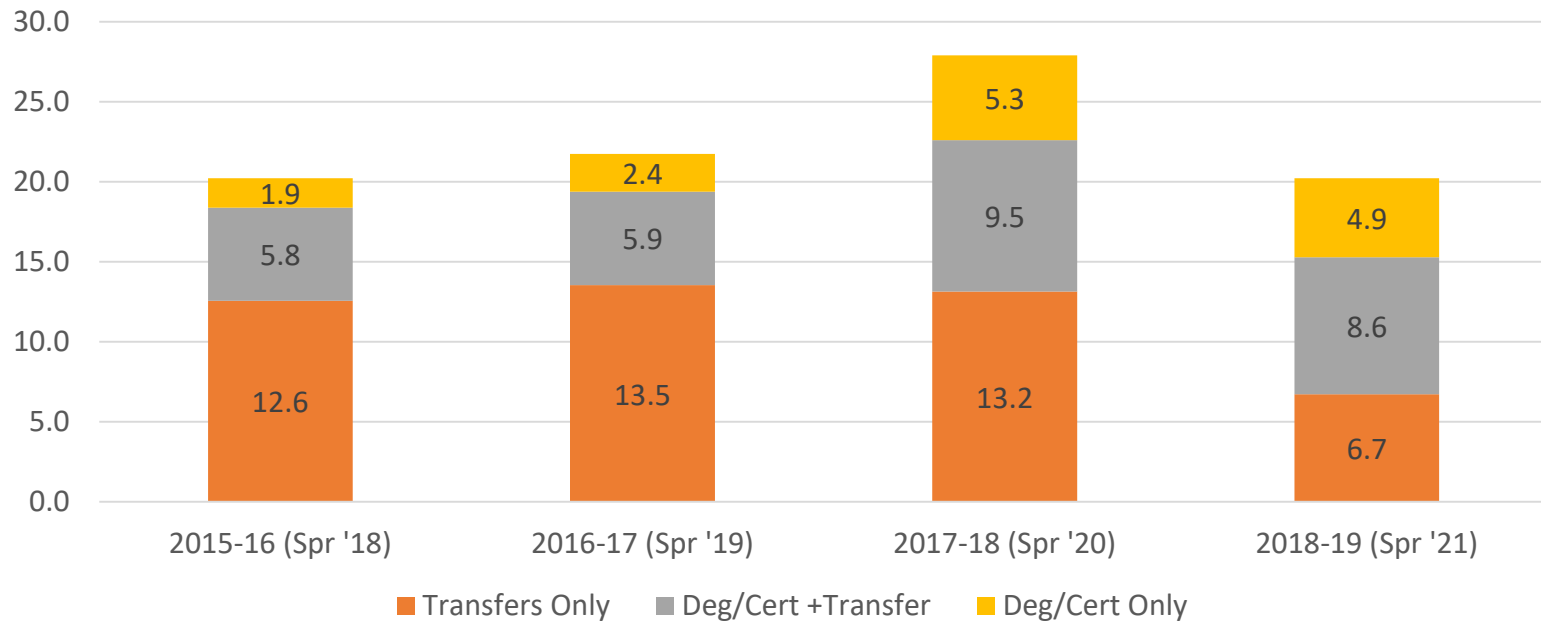


Guided Pathways Momentum Points

1. Enrollment for First-Time Freshmen by Full-Time and Part-Time Status
2. Average Units Earned During First Year
3. Passed English and Math During First Year
4. 3-Year Completions by:
 - a) Degree, Certificate, and Transfer
 - b) Degree and Certificate Only
 - c) Transfer Only



3-Year Completion Percentages by Type, Districtwide (ending term in parenthesis)

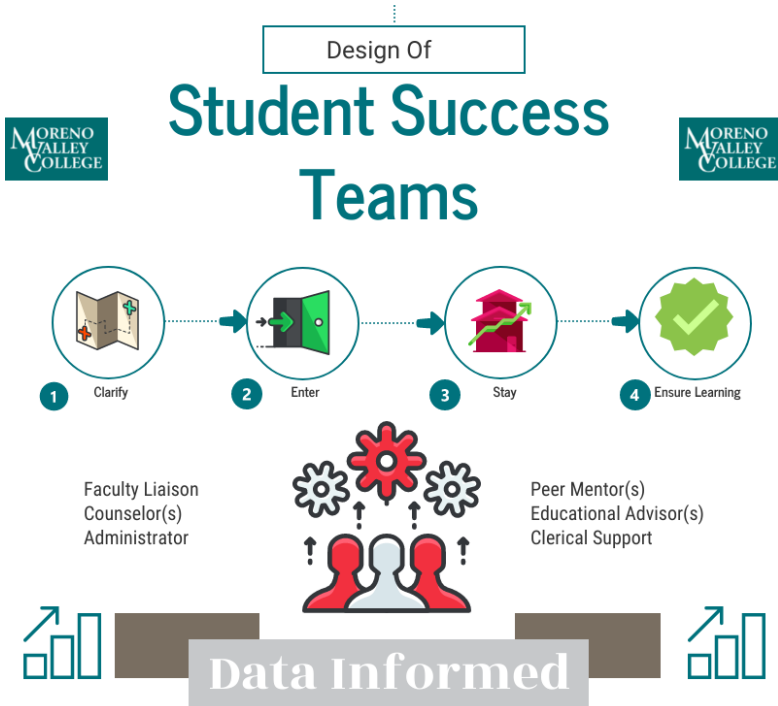


	2015-16 (n=7845)	2016-17 (n=7708)	2017-18 (n=8368)	2018-19 (n=7863)
All Completions	20.3	21.7	27.9	20.2
Transfers Only	12.6	13.5	13.2	6.7
Deg/Cert + Transfer	5.8	5.9	9.5	8.6
Deg/Cert Only	1.9	2.4	5.3	4.9



Moreno Valley College

Board of Trustees Guided Pathways



Highlight: Launch of Engagement Centers & Student Success Teams

- Engagement Center services are offered both in person and virtually
- Hired 5 Educational Advisors and 7 Peer Mentors
- Faculty Liaisons and Counselors are assigned to each Engagement Center
- High contact points and case management framework developed
- Career Focused Onboarding

Highlight: STEM Engagement Center and Alumni Speaker Series


MVC STEM Center Presents

STEM Career Exploration: Biology

Curious about what careers you could pursue with a biology degree? Join us for a workshop on: how to search for careers in this field, salary and job outlook, and a deeper dive on a few popular careers.

FEB 23 • 12:50-1:50PM

Register at bit.ly/mvcstemcareerspring22



FROM MVC TO  

BOEING


Meet Andrés Padilla, MVC alum and current Space and Launch Systems Engineer at Boeing, to hear about his experience transferring to UCLA and working as an Aerospace Engineer.

**Wednesday, April 6
5 - 6 pm**

Register at: bit.ly/mvcstem040622



++
++
++
++


From MVC to 

UCR School of Medicine

Join us for a conversation with Hollie St. Claire, MVC Alum and current medical student at the UCR School of Medicine, to hear about her experience transferring to UCLA and in medical school.

**Wednesday, March 16
5 - 6 pm**

Register at: bit.ly/mvcstem031622



NORCO 

PRESENTS

INTERNSHIPS AND RESEARCH IN STEM

Learn how to find internships and research opportunities in STEM, and the application basics. No experience required. All years and majors are welcome!

**TUESDAY, FEBRUARY 1
12:50-1:50PM AND 5-6PM**


Virtually via Zoom!

For Questions please contact:
katie.owashi@mvc.edu (MVC)
patricia.gill@norcocollege.edu (Norco)

REGISTER NOW!

bit.ly/STEMinternships2022spr





STEMWEEK 2022

APRIL 18-22

Events are open to all students!

MON 4/18	STEM Transfer Alum Panel 5-6pm, Zoom
TUES 4/19	DNA Extraction Demonstration with Dr. Joanna 12:50-1:50pm, SCI-101
WEDS 4/20	STEM Career Exploration: Math 12:50-1:50pm, HM-205A or Zoom Cricut Workshop (iMake Innovation Center) 1-2pm, Zoom Community College to Medical School 12:50-1:50pm, SCI-101 or Zoom

MVC STEM CENTER PRESENTS

SET UP FOR STEM SUCCESS

Tips & tricks on how to be successful in your Spring STEM Classes!

**FEBRUARY 15, 16, & 17
10-10:30AM AND 1-1:30PM**

Register at bit.ly/stemspringsuccess22

Moreno Valley College Next Steps

- Physical Engagement Center locations are under construction and are expected to open Fall 2023
- Procure software that will aid with case management
- Identify gaps in resources (physical, human, financial) for each Engagement Center
- Scale Engagement Center marketing and activities for students
- Pilot new "Right Track" Early Alert system for Academic Support Services and Library Expand professional development for faculty and tutors
- Aligning the goals and objectives of Guided Pathways into the college's new governance structure



NORCO COLLEGE

RCCD Board of Trustees Guided Pathways Presentation

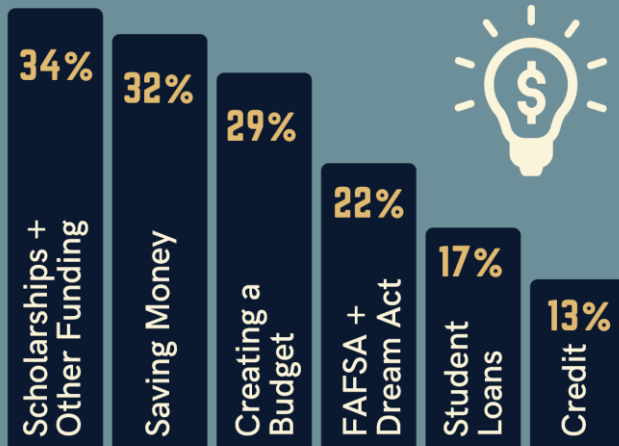
Norco Highlight: Student Equity Focus

Holistic Student Support Survey

Support Services/Basic Needs, Career Development, Financial Education, Academic Planning, & Campus Connections

FINANCIAL EDUCATION TOPICS

Approximately **75%** of incoming Norco College students were interested in financial education topics (n = 1,174). The figure below illustrates the percent of incoming students who were interested in each financial education topic.



STUDENT SUPPORT SERVICES

STUDENT SUPPORT NEEDS

In this section, students were asked to identify support services that would benefit them.

EMPLOYMENT

277

incoming students were interested in support with employment (17.7%).

TRANSFER

197

incoming students requested support researching universities for transfer (12.6%).

WELLNESS

151

incoming students had health and wellness concerns (e.g., sleep, depression) (9.7%).

TRANSPORTATION

100

incoming students needed assistance with transportation to/from the college (6.4%).

TECHNOLOGY

99

incoming students needed support accessing technology (e.g. internet) (6.3%).

HOUSING

76

incoming students needed support finding stable housing (4.9%).

DISABILITY

69

incoming students requested support for a disability or health concern (4.4%).

FOOD

59

incoming students had food insecurities for themselves and/or their families (3.8%).

SECURITY

46

incoming students had concerns about their personal security (2.9%).

CHILD CARE

43

incoming students requested support with accessing child care (2.8%).

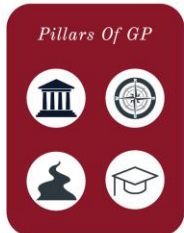
- Collects comprehensive student data in the onboarding process
- Engagement Center team provides personalized and timely supports & referrals
- Student data utilized to inform services and supports for students using an equity lens

Norco Highlight: Campus Focus

Lunch and Learn & Podcast Series Launch

Campus wide re-engagement in **Equity in Guided Pathways** work to support Project Team participation from faculty, classified professionals, students, and managers

Guided Pathways & Equity Lunch & Learn

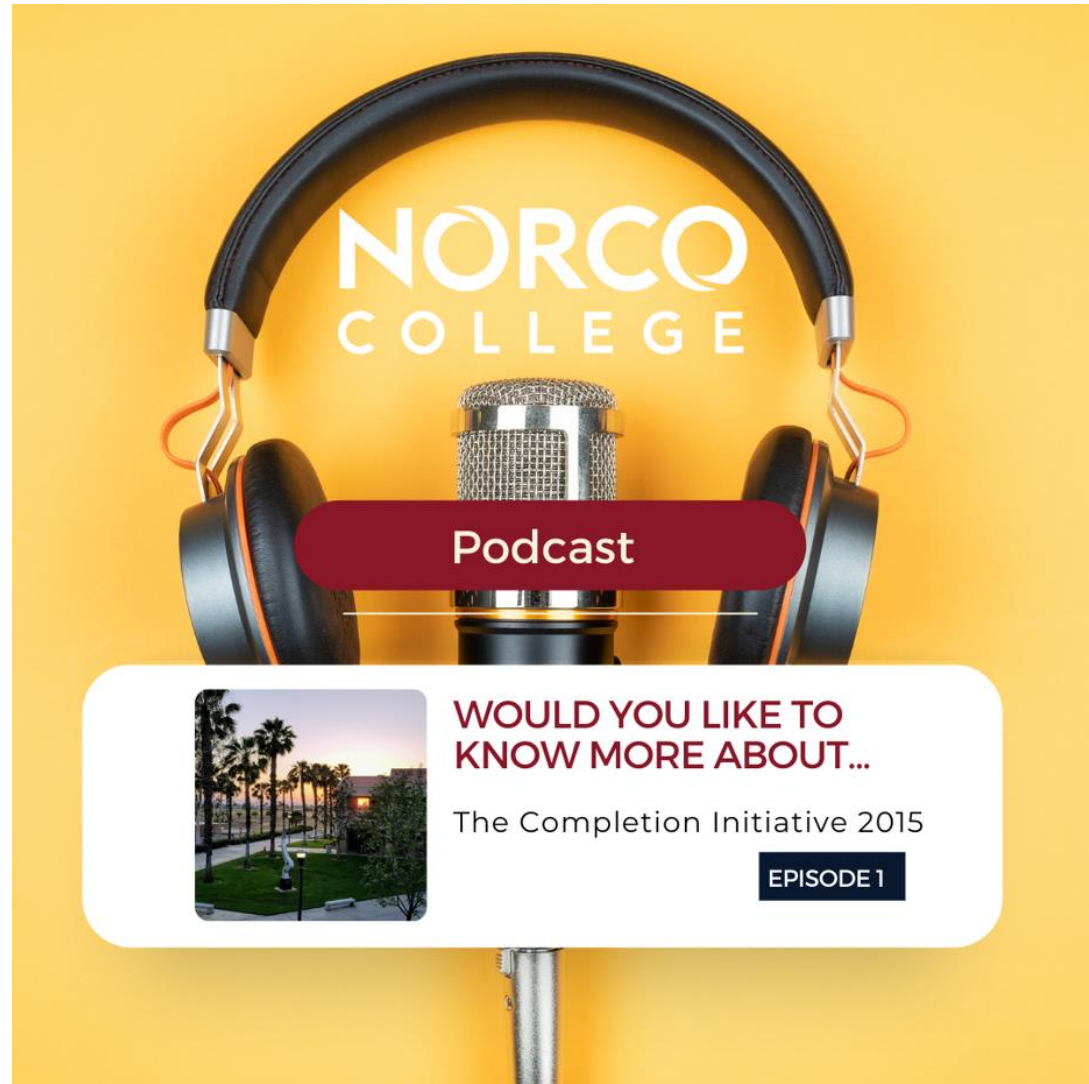


March 28th Lunch & Learn Recap

Listen to the recording to the first Lunch & Learn here. Explore new data points and a proposal to change the Norco College Meta-Majors.

Data Driven Gains:

- ✓ Increase FT Students
- ✓ Reduce Unit Load
- ✓ Reduce Equity Gaps
- ✓ Reduce Time to Degree
- ✓ Increase Completions



Norco College Next Steps

Student Experience Focused Efforts

- Launching Financial Literacy Coaching
- Peer Ambassador Program
- Upcoming Student Voice Project – Onboarding
- 2022-23 Student Focused Project Teams:
 - Student Success Network
 - School Culture

Your Path to Financial Freedom Begins Here

The Norco College Financial Freedom program provides financial education designed to help college students make responsible and wise financial decisions. Through this program, all Norco College students have free access to nationally acclaimed personal finance training, interactive online finance workshops, and financial resources.

Use the buttons below to access our online financial services:



NORCO COLLEGE FINANCIAL FREEDOM

ONLINE FINANCE WORKSHOPS

JOIN US as we learn all about saving money, creating a budget, using student loans, and managing debt.

Monday 4/4/22 @ 1:00pm Tips and Tricks for Managing Credit
 Monday 4/18/22 @ 1:00pm Building a Financial Plan for College
 Monday 5/2/22 @ 1:00pm Understanding Student Loans
 Monday 5/16/22 @ 1:00pm Managing Your Money to Build Your Best Life

STUDENT LOAN DOCUMENTARY SCREENING

"BORROWED FUTURE" discusses the controversial topic of student loans and their massive impact in the modern economy. Come learn about the realities of living with student loan debt and several approaches to graduating from college debt free.

Thursday 4/7/22 from 3:00pm – 5:00pm
 Tuesday 4/12/22 from 1:00pm – 3:00pm

SIGN UP TODAY
WWW.NORCOCOLLEGE.EDU/FINANCIALFREEDOM
 and click on "Online Finance Workshops"

*The Financial Freedom program is sponsored by the RACE3 grant from the U.S. Department of Education's Developing Hispanic-Serving Institutions (HSI) program, Grant P0313190318. Online finance workshops are offered in collaboration with the Babson Financial Literacy Project.



Strategic Alignment & Integration

- Continued integration of Equity in Guided Pathways guided by new Student Equity Plan
- Expansion of Communities of Practice
- 2022-23 Institutional Project Teams:
 - Equitable Assessment (in collaboration with Leading from the Middle Academy)
 - School Organization

OUR WHY:
 Our current assessment process is failing students by neglecting to consider disaggregated student learning data.

OUR WHAT:
 Develop a process to assess SLOs using Canvas Gradebook and integrate Canvas and Nuventive.

OUR HOW:
 To use data disaggregated by equity groups as the cornerstone of student learning assessment to close equity gaps and support decision-making at the College.

OUR CALL TO ACTION:
 Commit to recognizing and addressing racial inequities and contribute to a change of culture at all levels of the institution.





Riverside City College

Board of Trustees Guided Pathways

RCC Highlights



Engagement Centers and Student Success Teams

- Student Success Teams assigned
- Physical spaces identified
- Canvas Hubs available for each Engagement Center

The screenshot shows the 'RCC Student Resources' website. At the top, there is a navigation bar with 'Home' and 'Pages'. Below this, a large banner features the text 'Welcome To The Student Support Hub!' in orange and white. Underneath the banner, a welcome message reads: 'Welcome to Riverside City College's Student Support Hub! Please click the links below to explore the many student support resources available to you. Do you have questions? We have answers!' Below this, there are two sections: 'College Updates: Winter 2022 Updates:' with links for 'CLICK HERE TO REQUEST A LAPTOP' and 'CLICK HERE TO REQUEST A HOTSPOT', and 'Academic Support (Tutoring & Library)'. At the bottom, there are three columns of resources: 'Center for Communication Excellence (CCE)' with a pencil icon, 'Library Online' with a book icon, and 'Wiley Course Resources' with a book icon.

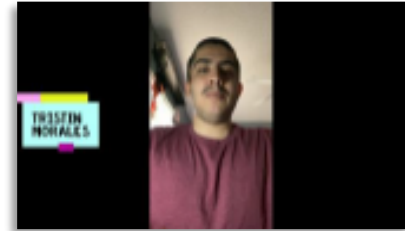
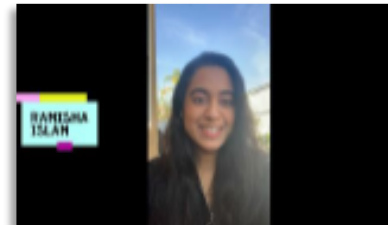
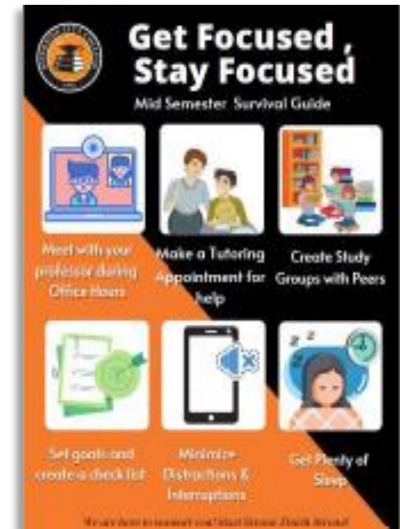
RCC Highlights

Student Centered:

- Formal Guided Pathways Plan
- Ensured alignment across Student Equity and Achievement, Guided Pathways, and Institutional Effectiveness Partnership Initiative to scale practices

Student Voice Project:

- Guided Pathways, Student Ambassadors
- Start Strong, Finish Strong: GRIT Campaign



RCC's GP Next Steps

Career Focus:

- Re-energize focus on student success
- Redesign college structures and services to provide clear pathways
- Distinguish career guidance and career exploration
- Explore contextualized learning with career focus



Engagement Focus:

- Hear more student voices in new ways
- Restructure support in engagement centers for students and teams
- Implement inescapable student support plan – application to completion
- Consider AB705 and dual enrollment outcomes with GP





Thank You

Questions?



Guided Pathways

District-level Progress on Momentum Points and College Updates

end of presentation