

**RCCD**

**RIVERSIDE COMMUNITY  
COLLEGE DISTRICT**

MORENO VALLEY COLLEGE | NORCO COLLEGE | RIVERSIDE CITY COLLEGE

# Inland Empire Technical Trade Center (IETTC)

**Community Meeting – April 2026**





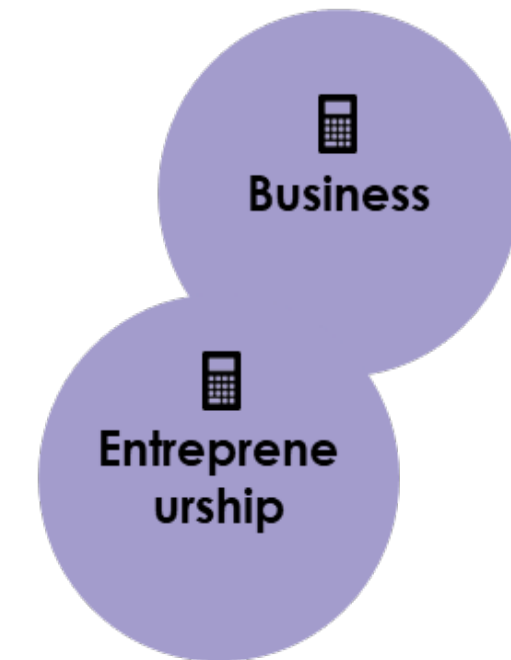
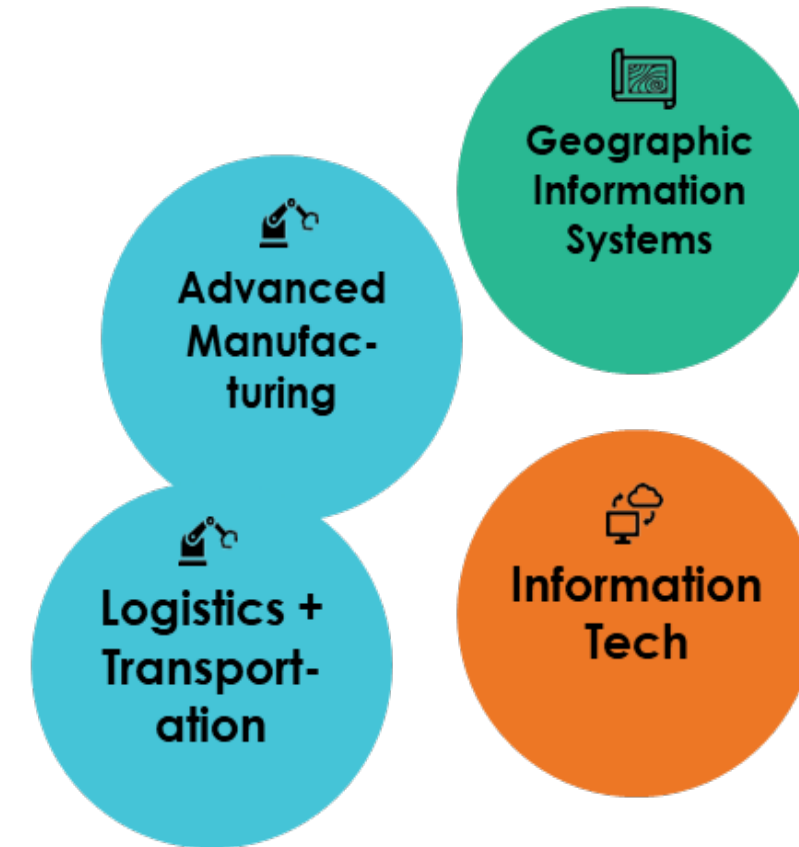
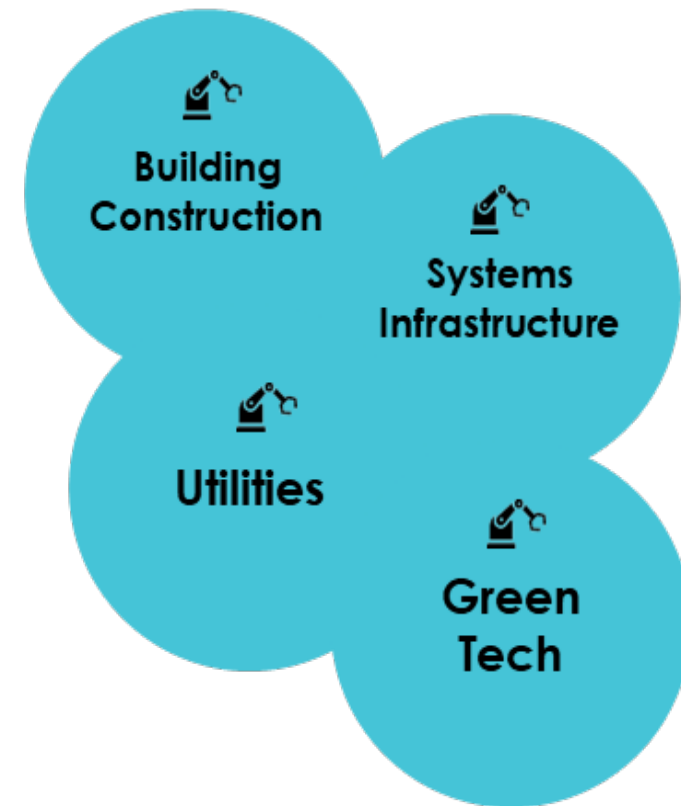
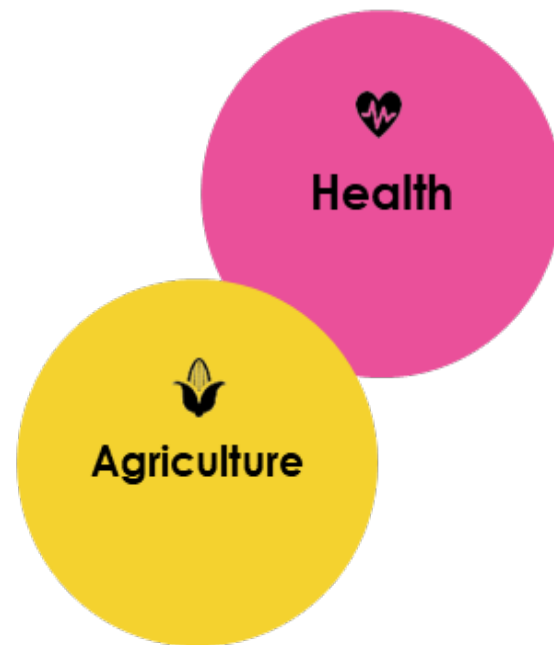
- Community Partnership
- Program Focus
- Project Specifics
- Local Investment
- Site Information
- Project Schedule

# Community Partnerships

- ❑ The Inland Empire Technical Trade Center is designed to foster strong partnerships between education, industry, and the community, including:
  - Workforce training aligned with regional employers
  - Partnerships with trade unions and apprenticeship programs
  - Collaboration with healthcare, manufacturing, and utility employers
  - Engagement with local schools, workforce agencies, and community organizations
- ❑ The center will create pathways for students into meaningful careers while supporting regional economic growth



# Program Focus



# Project Specifics

- ❑ 6464 33<sup>rd</sup> Street in Jurupa Valley, California 92509
- ❑ Total Investment (**\$213 million**):
  - \$33 million (State) for 24.5 acres land acquisition
  - \$180 million (Measure CC) for the Project
- ❑ Two instructional buildings
- ❑ ~500 full-time equivalent students
- ❑ Instructional labs, classrooms, student support space, and industry-collaboration areas

# Local Investment

- Expands access to career technical education
- Supports workforce development aligned with local industry needs
- Creates partnerships with employers, trade organizations, and community groups
- Strengthens economic opportunity for local residents
- By connecting education with industry, the center will help build a stronger regional workforce pipeline

# Site Plan



## Building 1A

- 4 classrooms
- 12 class labs (includes double height labs)
- 2 computer labs
- Secondary study space
- Secondary student-centered space
- AV/TV space

## Building 1B

- 4 classrooms
- 2 class labs
- 2 computer labs
- Office space on top floors
- Primary study space
- Primary student-centered space
- Multipurpose room (community) fronting plaza
- Shared community uses – health and wellness, food
- AV/TV space

- Building
- Grass
- Hardscape
- Outdoor Lab
- Dropoff/Super Sidewalk
- Road
- Surface Parking

# Open Space

- 1 Open space next to residential areas
- 2 Development south of site
- 3 Relatively small site area to secure

- Key open spaces/quads
- Central plaza near student services
- Outdoor Lab
- Entrance



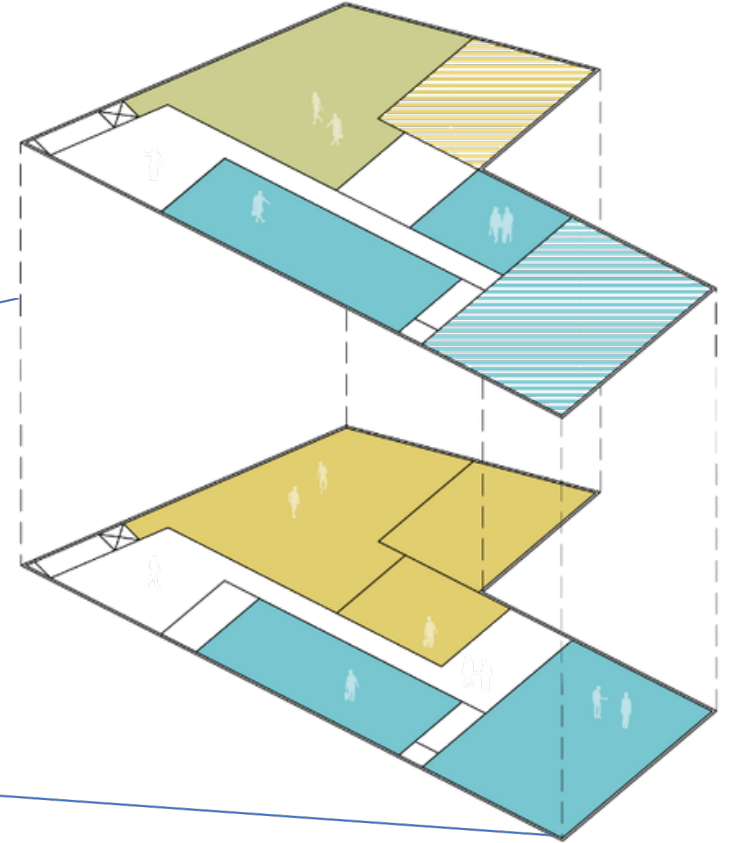
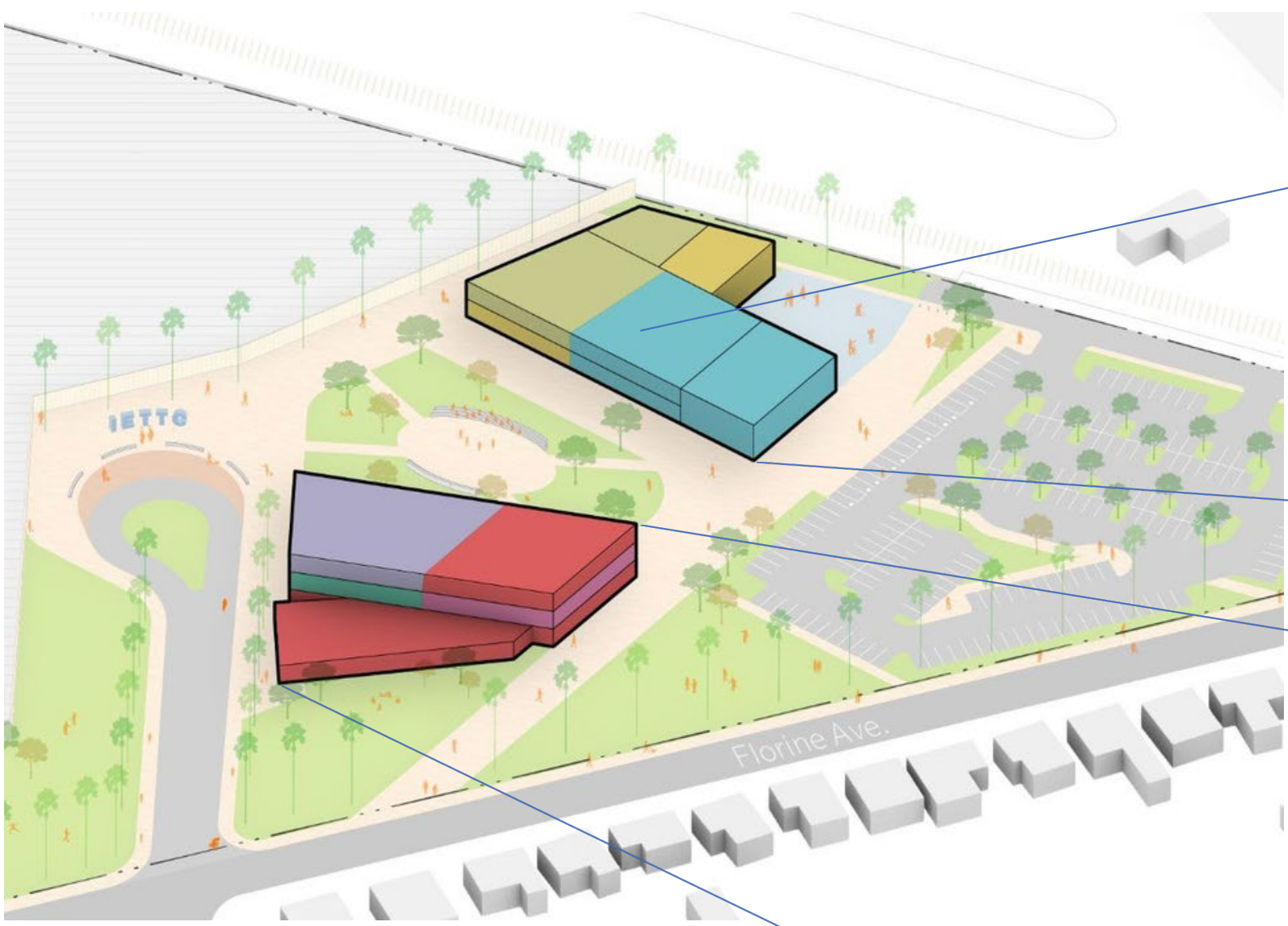
# Circulation

- Central plaza near student services
- Drop-Off
- Entrance
- Exterior Roads Interior Roads
- Parking Garage Surface Parking Lot

- 1 Defined entrance at 34<sup>th</sup> St.
- 2 Drop-off at center of campus
- 3 Surface Parking lot to south

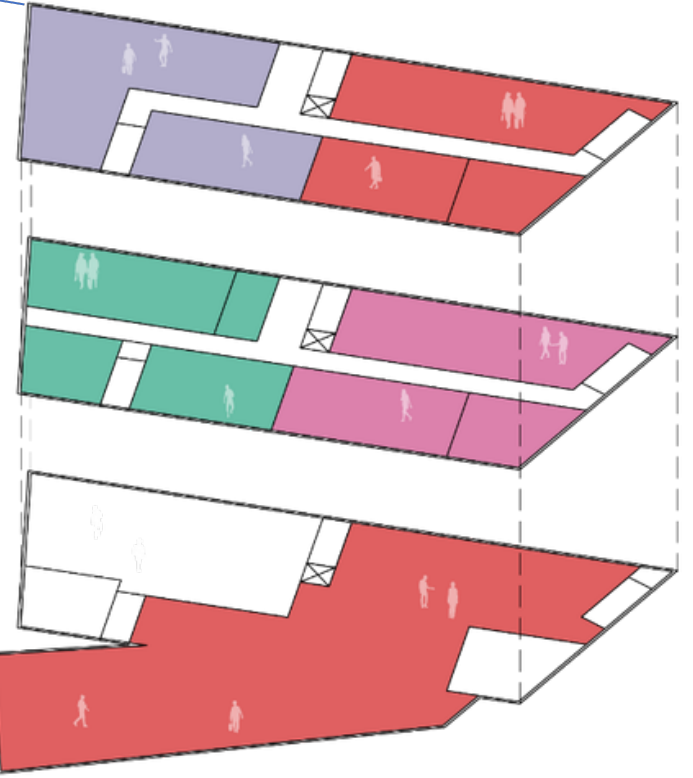


# Program Distribution



- 1A – Floor 2**
- Technicians
  - Engineering and Industry Technology

- 1A – Floor 1**
- Agriculture and Natural Resources
  - Engineering and Industry Technology



- 1B – Floor 3**
- Information Technology
  - General Classrooms

- 1B – Floor 2**
- Business and Management
  - Health

- 1B – Floor 1**
- Student Services

- Student Service and General Classrooms
- Agriculture and Natural Resources
- Engineering and Industry Technology
- Technicians
- Information Technology
- Business and Management Health
- Health





# Project Schedule

## ACTIVITY

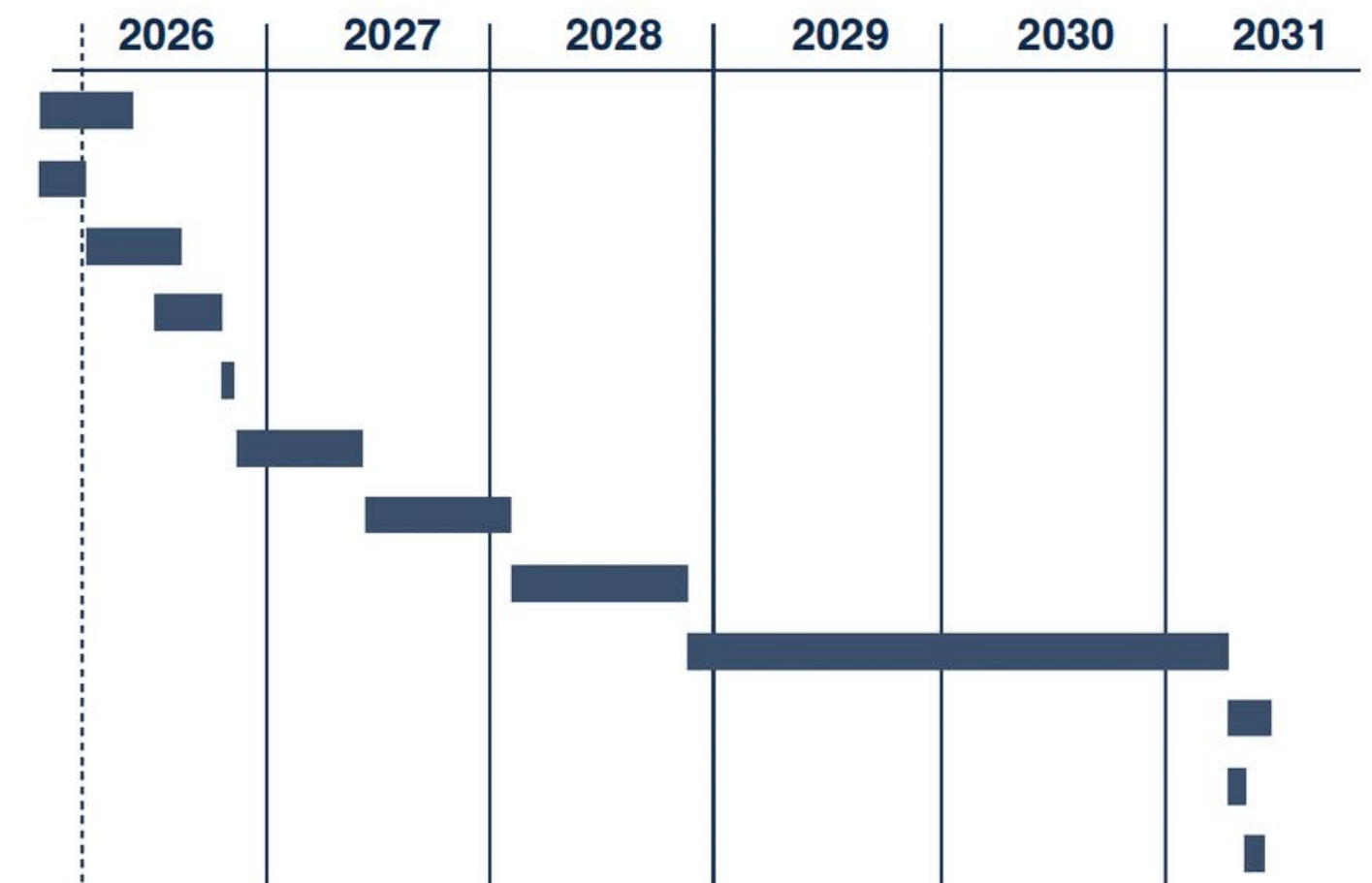
Site Entitlement / Environmental Reviews  
 RFP/Q / Procure - Architect For Programming  
 Programming  
 Procure PDB Entity  
 Contract Execution and NTP  
 Preliminary Plans  
 Working Drawings  
 DSA  
 Construction  
 Close Out  
 FF&E  
 Move-In

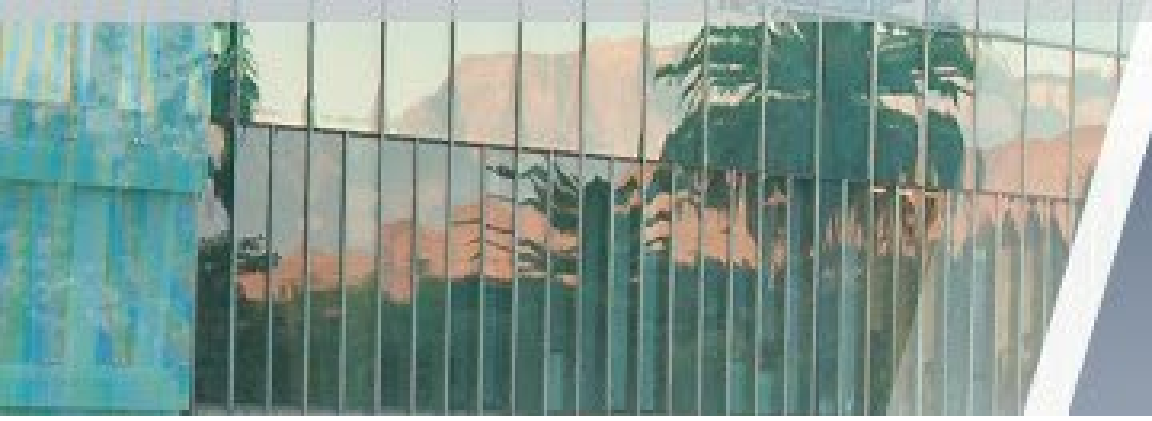
## START

FALL 2025  
 WINTER 2025  
 SPRING 2026  
 SUMMER 2026  
 FALL 2026  
 FALL 2026  
 FALL 2026  
 SUMMER 2027  
 SPRING 2028  
 FALL 2028  
 SPRING 2031  
 SPRING 2031  
 SUMMER 2031

## FINISH

SUMMER 2026  
 SPRING 2026  
 FALL 2026  
 FALL 2026  
 FALL 2026  
 SUMMER 2027  
 SPRING 2028  
 FALL 2028  
 SPRING 2031  
 SUMMER 2031  
 SPRING 2031  
 SUMMER 2031





**RCCD**

**RIVERSIDE COMMUNITY  
COLLEGE DISTRICT**

MORENO VALLEY COLLEGE | NORCO COLLEGE | RIVERSIDE CITY COLLEGE

# Q&A

